

Uppgjord (även faktaansvarig om annan) - Prepared (also subject responsible if other)		Nr - No.		
Sara Hedfors		POL-08:120		
Dokansv/Godk - Doc respons/Approved	Kontr - Checked	Datum - Date	Rev	File
Thomas Hedfors	TH	2008-07-09	A	

POLTECH Test Com

POLTECH Test Com is a test program for communication with signs. The program can be used for all POLTECH signs (and most other signs too in raw-mode).

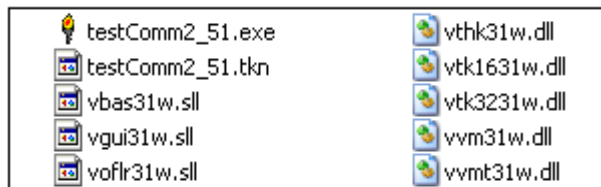
TestCom should work on Windows 95, 98, 2000, ME, NT and XP.

TABLE OF CONTENT

INSTALLATION..... 1
 PORT SETTINGS..... 2
 LOAD AND SAVE..... 2
 SEND DATA POLNET..... 3
 SEND DATA RAW..... 4
 RECEIVE DATA..... 4
 SCAN FOR SIGNS..... 4
 TIPS AND TRICKS..... 4

INSTALLATION

Copy all the files in the archive to a directory from where the program are to be run. The program is now ready to run. Double click on the exe-file (🔦-ikon) to launch the program.



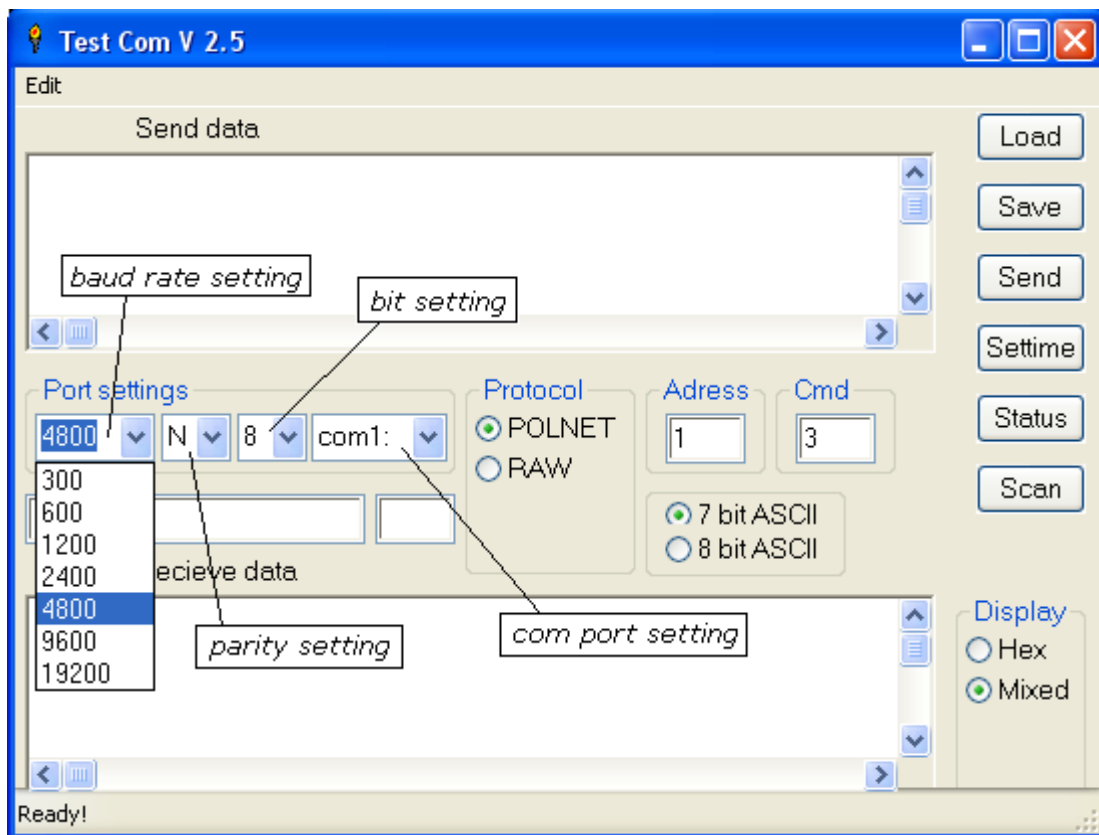
Files that are required for the program. All shall be located in the same directory.

Huvudkontor	Produktion	Postgiro	Org.nr.
Kvartsgatan 1 B	Skäggebyvägen 33	48 54 14-7	556536-8817
SE-749 40 ENKÖPING	SE-612 44 FINSPÅNG		
Telefon +46 (0)171-41 45 90		Bankgiro	Hemsida
Fax +46 (0)171-41 45 95		5086-1483	www.poltech.se

Uppgjord (även faktaansvarig om annan) - Prepared (also subject responsible if other)		Nr - No.		
Sara Hedfors		POL-08:120		
Dokansv/Godk - Doc respons/Approved	Kontr - Checked	Datum - Date	Rev	File
Thomas Hedfors	TH	2008-07-09	A	

PORT SETTINGS

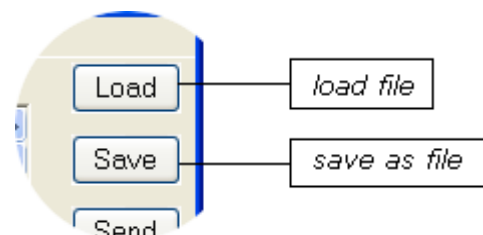
There are four port settings need to be done. First choose the baud rate for the communication. The options are 300, 600, 1200, 2400, 4800, 9600 and 19200. The next setting is the parity. Choose between non parity (N), even parity (E) and odd parity (O). The bit setting can be either 7 bit per byte or 8 bit per byte. Finally choose which com port are used for the communication. Default settings are 4800 baud, non parity, 8 bit per byte and com 1.



Port settings

LOAD AND SAVE

To load data from a text file to the *Send data*-box, click on the *Load* button and browse to the desired file. To save data from the *Send data*-box as a file, click on the *Save* button, choose a file name and browse to the desired directory. All files are saved as plain text files.



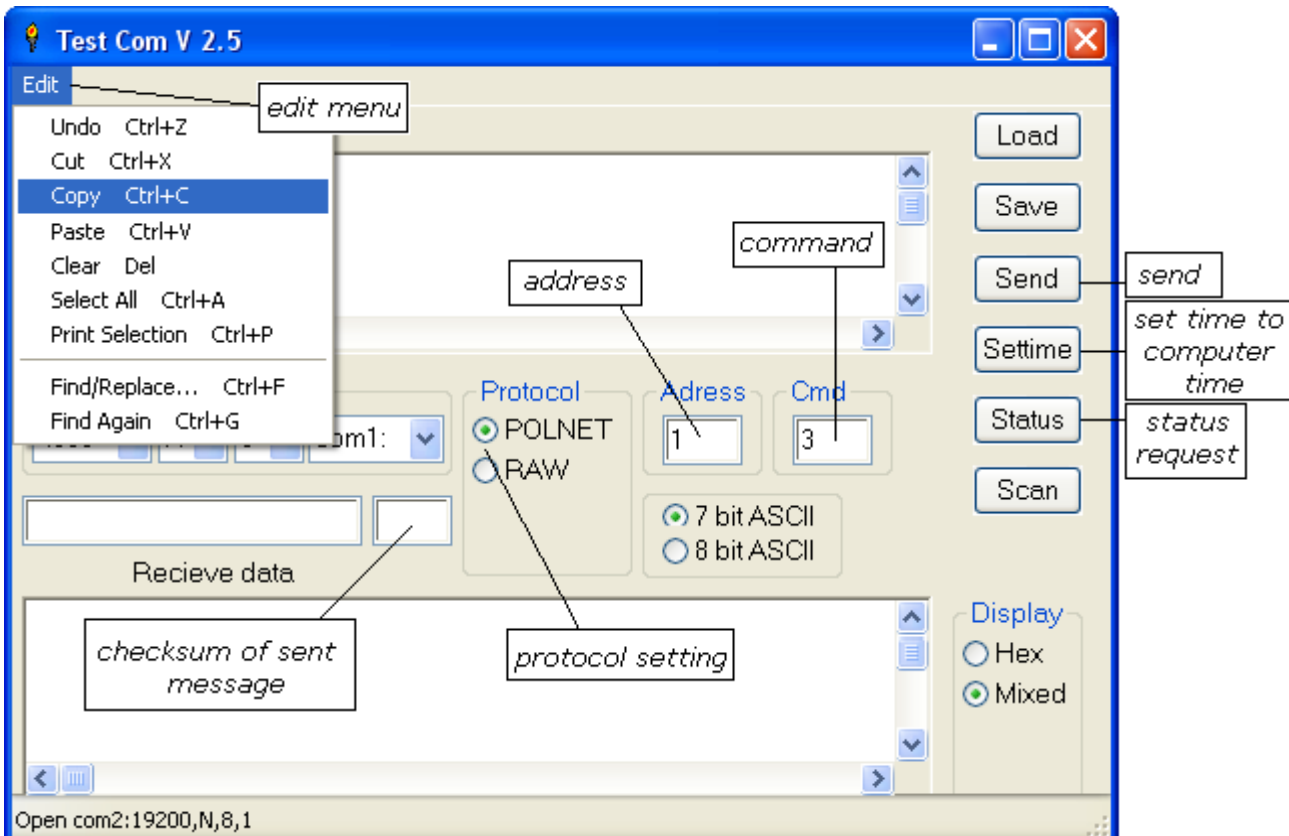
Uppgjord (även faktaansvarig om annan) - Prepared (also subject responsible if other)		Nr - No.		
Sara Hedfors		POL-08:120		
Dokansv/Godk - Doc respons/Approved	Kontr - Checked	Datum - Date	Rev	File
Thomas Hedfors	TH	2008-07-09	A	

SEND DATA POLNET

To send data with POLNET protocol, headers automatically added, *Protocol* shall be chosen POLNET. This way only the information field have to be written in the *Send data*-box, POLNET flag-, address-, command-, bytecount- and checksum-fields are added by the program.

Choose *Address* to sign and command (*Cmd*). The different commands can be found in the POLNET manual. The default setting is 3 – load text and start text. When information is written/loaded to the *Send data*-box, click on the *Send* button to send to sign. Note that all hexadecimal numbers should be represented with a backslash (\) in front, e.g. '\2E'.

When data have been sent to the sign, the checksum of the message appears in the little box above the *Receive data*-box.



When POLNET protocol is chosen, the time in the sign can be set by clicking the *Settime* button. Note that the computer clock will be used, so check if it is set to correct time before using this button.

To send a status request to sign, click on *Status* button.

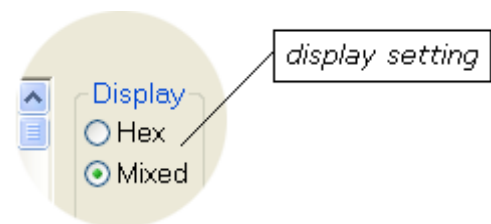
Uppgjord (även faktaansvarig om annan) - Prepared (also subject responsible if other)		Nr - No.		
Sara Hedfors		POL-08:120		
Dokansv/Godk - Doc respons/Approved	Kontr - Checked	Datum - Date	Rev	File
Thomas Hedfors	TH	2008-07-09	A	

SEND DATA RAW

To send data in raw-format, i.e. write the hole data packet with headers and information, *Protocol* shall be chosen RAW. When the information is written/loaded to the *Send data*-box, click on the *Send* button to send to sign. Note that all hexadecimal numbers should be represented with a backslash (\) in front, e.g. '\2E'.

RECEIVE DATA

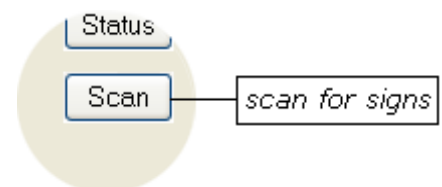
There are two choices how to display received information from the sign, *Hex* and *Mixed*. *Mixed* means that all writable characters are displayed as characters and the non writable are displayed as hexadecimal numbers. If on the other hand *Hex* is chosen, all characters are displayed as hexadecimal numbers.



All hexadecimal numbers are represented with a backslash (\) in front, e.g. '\2E'.

SCAN FOR SIGNS

There is a built in feature to scan for available signs (i.e. signs that are responding on status request) communicating with the POLNET protocol.



Make sure that *Protocol* is chosen to POLNET. Click on the *Scan* button. Enter the range of addresses within to scan by writing the lowest address in the first dialog box and the highest address in the second dialog box. The result of scan is displayed in the *Send data*-box.

TIPS AND TRICKS

If you want to sent POLNET in raw-format but are uncertain with the headers, send the message as usual with *Protocol* chosen to POLNET first. When you do this you don't connect the sign, but connects pin 2 and 3 of the 9-pin serial contact. This way you will receive the information sent including all headers in POLNET raw-format. You then can copy and paste this to the *Send data*-box and switch to RAW.