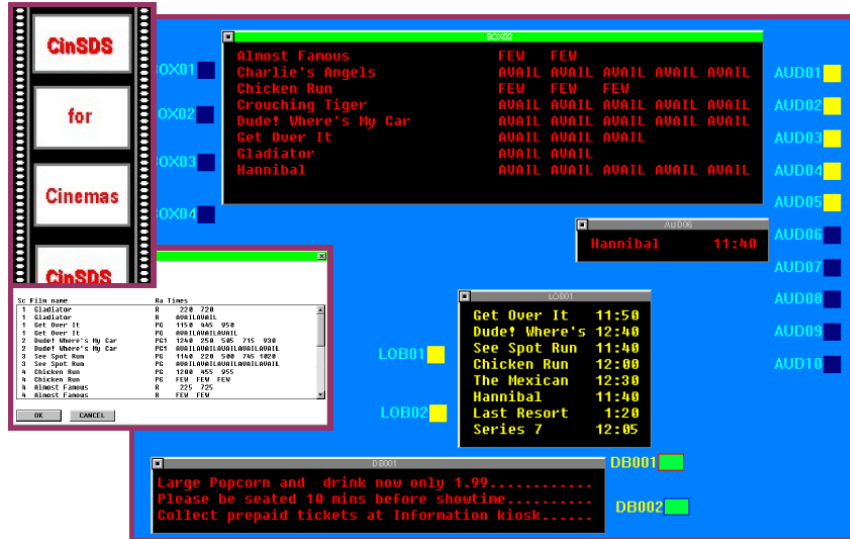


Uppgjord (även faktaansvarig om annan) - Prepared (also subject responsible if other)		Nr - No.			
Sara Hedfors		POL-07:106			
Dokansv/Godk - Doc respons/Approved	Kontr - Checked	Datum - Date	Rev	File	
		2007-08-13	B		

Cinema Information System:



Hardware

- Outdoor Signage
- Box offices Display
- Lobby directories
- Auditorium displays

Interfaces

- Scheduled Database Control
- Manual Override
- Text and Graphics Options

Software description

All Data Display cinemas are supplied with a user-friendly Windows based software, CINSDS, that can be customized to meet the needs of each individual cinema. The displays can also be interfaced with existing software packages, such as CATS/ TIMs, ICON and PRISM. On the screen of the software each individual display is identified by a box, by clicking on the box an operator can view the information currently being displayed on the sign, giving them the confidence that the correct information is being shown in the correct location. For easy of use displays can be programmed separately or grouped together.

CINSDS can also be interfaced directly with equipment common to cinemas such as:

- Fire Alarms
- Projection Equipment
- Queue Detection
- Ticket Dispensers
- Switch Contacts

Main office	Production	Postgiro	Org.no.
Kvartsgatan 1 B	Skäggebyvägen 33	48 54 14-7	556536-8817
SE-749 40 ENKÖPING	SE-612 44 FINSPÅNG		
Phone +46 (0)171-41 45 90		Bankgiro	Webpage
Fax +46 (0)171-41 45 95		5086-1483	www.poltech.se